

LUT-VDI portal – How to use virtual desktops and many applications remotely

Introduction

From the portal you can access and use for example LUT/LAB computer classroom programs remotely for example with your home computer. Some programs can be run straight from the portal, but due to technical or licensing limitations some programs are installed on virtualized Windows desktops, which you need to start before accessing the programs inside the desktop.

Be aware that there are limited number of desktops available, and some programs might have limited number of licenses. Due to these limitations, there might come situations, where desktops or programs are not available. Some programs might also be available only on campus area due to licensing restrictions. You can access them from for example computer classroom, from library computers or by using Eduroam wireless network with your own computer.

There are three ways to access LUT-VDI portal resources:

- With a web browser and VMware Horizon Client
- Using VMware Horizon Client only
- With a web browser without VMware Horizon Client (*consider this as a last option if VMware Horizon Client cannot be installed or is not working properly*)

Installing and using VMware Horizon Client is a recommended way to use portal resources instead of using a web browser without VMware Horizon Client installed. You cannot for example access your host computers resources without VMware Horizon Client installed on your computer.

VMware Horizon Client is available for Windows, Linux, macOS, iOS, Android, and Chrome OS devices.

Please log off from desktop or close the program after you are finished using it. By logging off you ensure that you will instantly free the used software licenses for next user.

Contents

Introduction	1
Installing VMware Horizon Client	3
Using LUT-VDI web portal with a browser and VMware Horizon Client	4
Using LUT-VDI resources with VMware Horizon Client only.....	6
Using LUT-VDI resources with a web browser without VMware Horizon Client	9
Additional info	11
Connecting and using USB devices in VMware Horizon Client.....	11
Share a folder from your host computer to a program or a virtual desktop	13
Changing display settings on virtual desktops.....	14

Installing VMware Horizon Client

VMware Horizon Client is installed on classroom computers, and it can be installed on your LUT/LAB work computer from “Software Center” (icon on start menu). For your personal computer or mobile device, it can be downloaded and installed from the link below:

<https://www.vmware.com/go/viewclients>

Your computer might restart automatically after the installation, so make sure your documents are saved which you are working with.

Documentation for VMware Horizon Clients can be accessed from the link below:

<https://docs.vmware.com/en/VMware-Horizon-Client/index.html>

Using VMware Horizon Client is recommended way to launch LUT-VDI resources. With VMware Horizon Client you can use your local printer and have access to local computer disk drives and USB flash drives from LUT-VDI virtual desktops or programs. You can also open resources inside the browser, but it has many restrictions and user experience is not as good than with Horizon Client.

Using LUT-VDI web portal with a browser and VMware Horizon Client

If you are using a LUT/LAB computer in campus network or VPN connection

- Navigate to address <https://one.lut.fi/> and you should be automatically signed into the portal without entering your username or password

If you are outside of campus network, like for example at home or using [Eduroam](#)

- Navigate to address <https://one.lut.fi/>

LUT University LAB University of Applied Sciences

Enter Username & Password

Username or email:

Password:

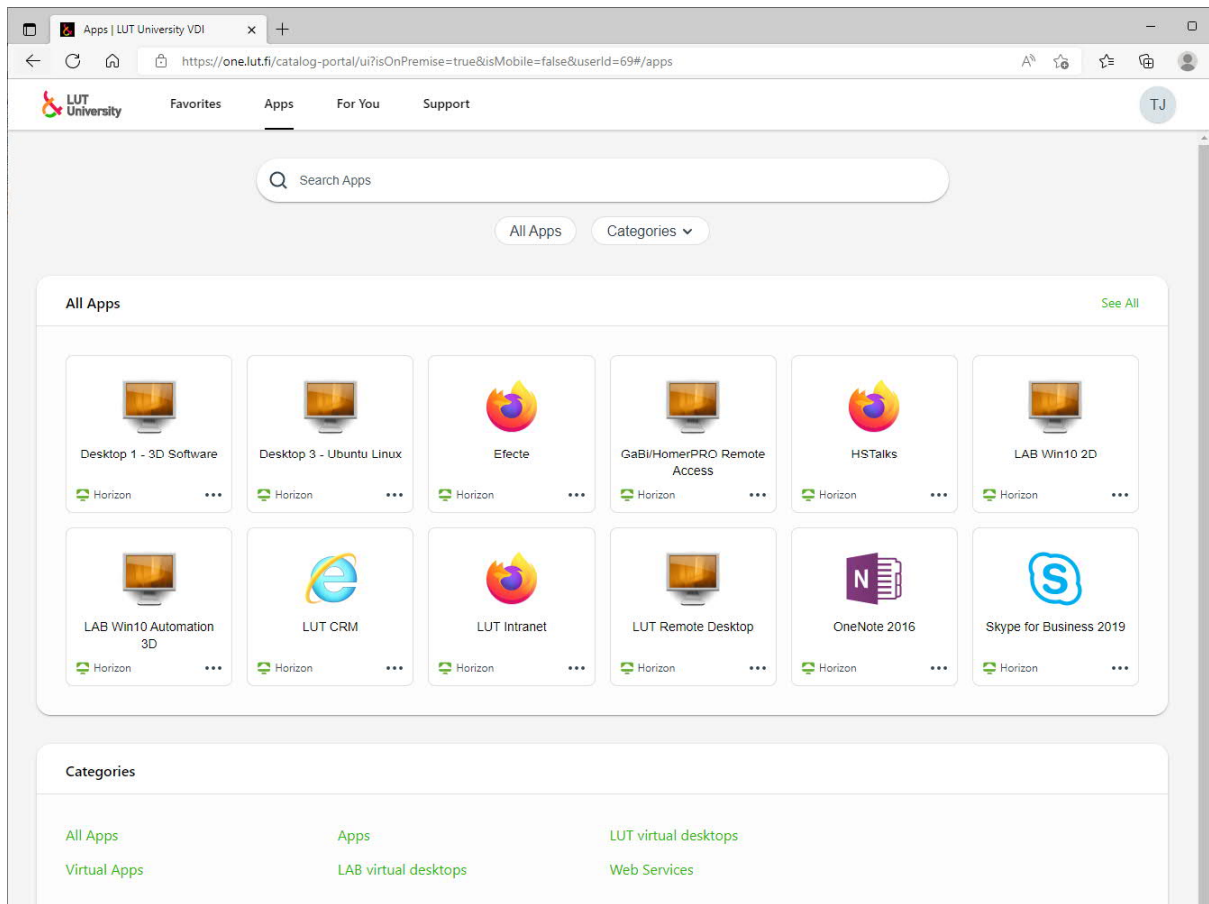
LOGIN

[Forgot your password?](#)

For security reasons, please [log out](#) and exit your web browser when you are done accessing services that require authentication!

Copyright © 2005-2019 Apereo, Inc.

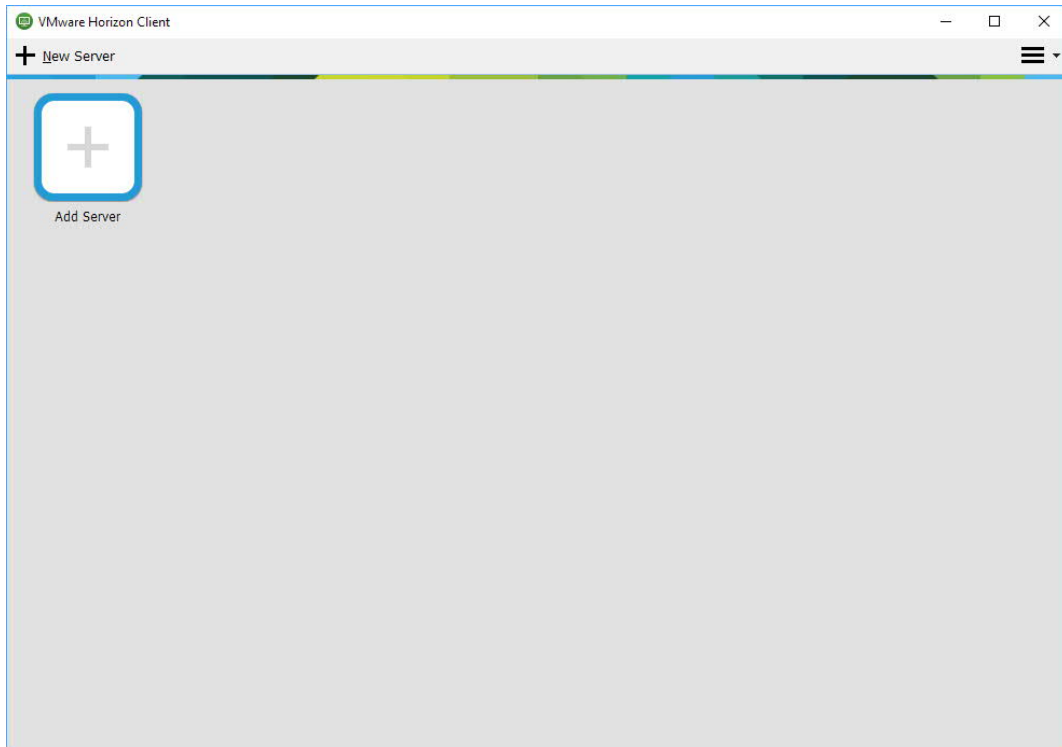
Enter your username or email address and password and click "Login". You will be redirected to LUT-VDI portal.



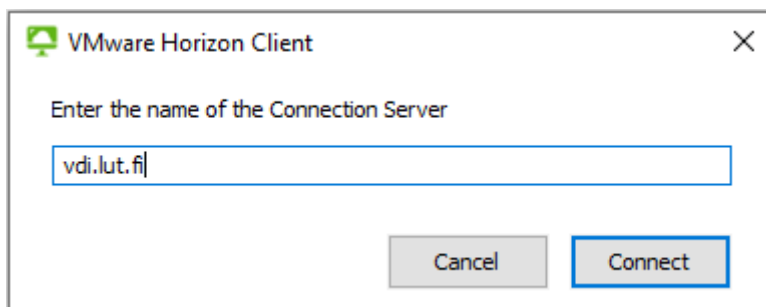
By clicking "All Apps", "... virtual desktops" or "Web Services" on the bottom of web page you will see a list of resources that are available for you, which can be launched using double click.

Using LUT-VDI resources with VMware Horizon Client

Start the client and double click "Add Server".



Type "vdi.lut.fi" as connection server name and click "Connect".

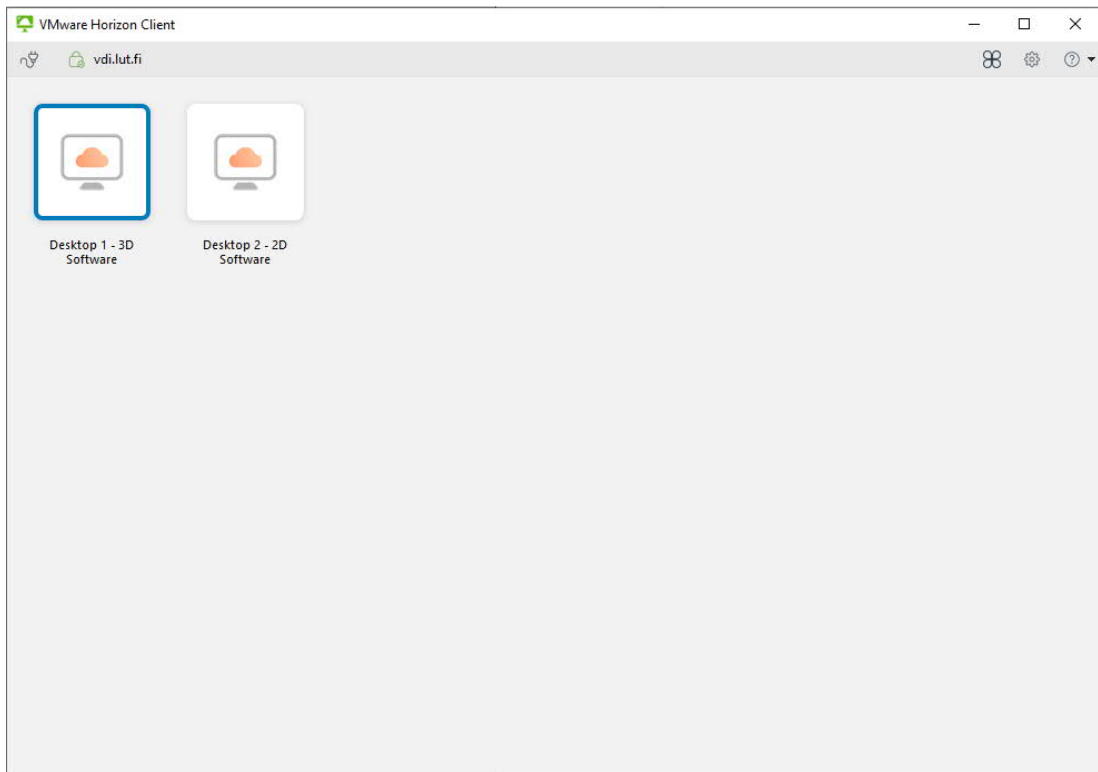


Next steps depend on are you connecting from internal network (in LUT campus or VPN) or from external network (eg. home pc).

1) *If you are using a LUT/LAB computer in campus network or VPN connection*

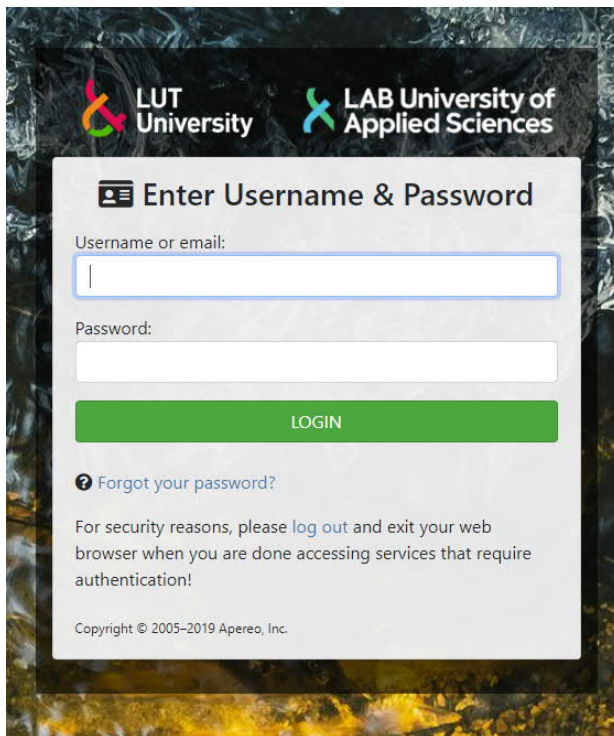
You should be automatically signed in without entering your username or password.

Programs and desktops are shown in VMware Horizon Client and can be launched by double clicking them.

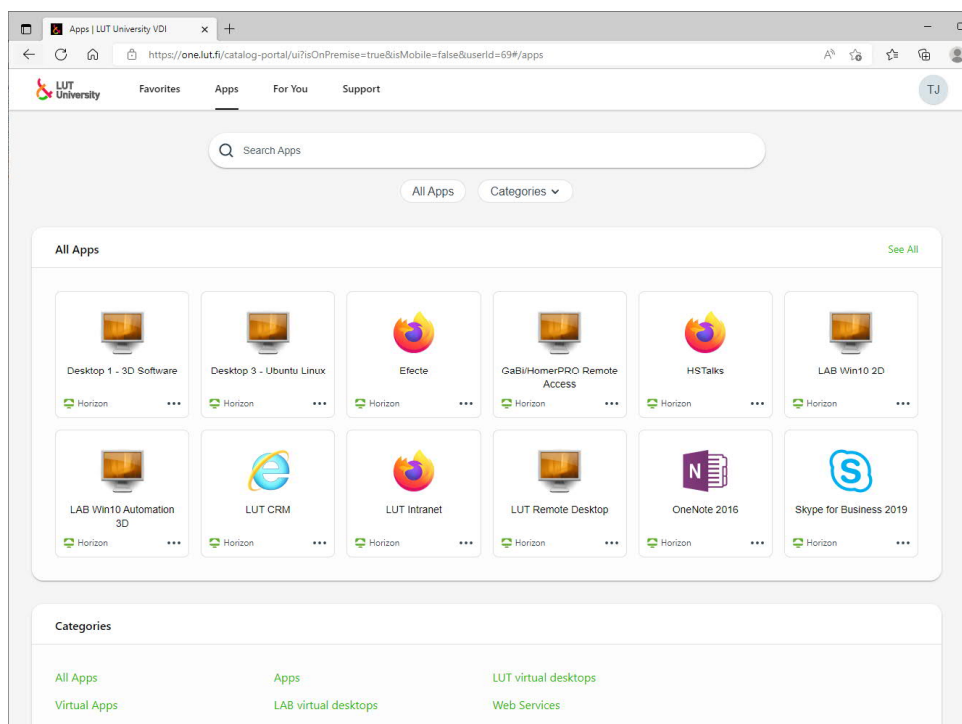


2) If you are outside of campus network, like for example at home or using [Eduroam](#)

After clicking "Connect" a browser window will be opened and you will be forwarded to authentication page where you must type your username and password. You can also use your e-mail address as username. Click "LOGIN".



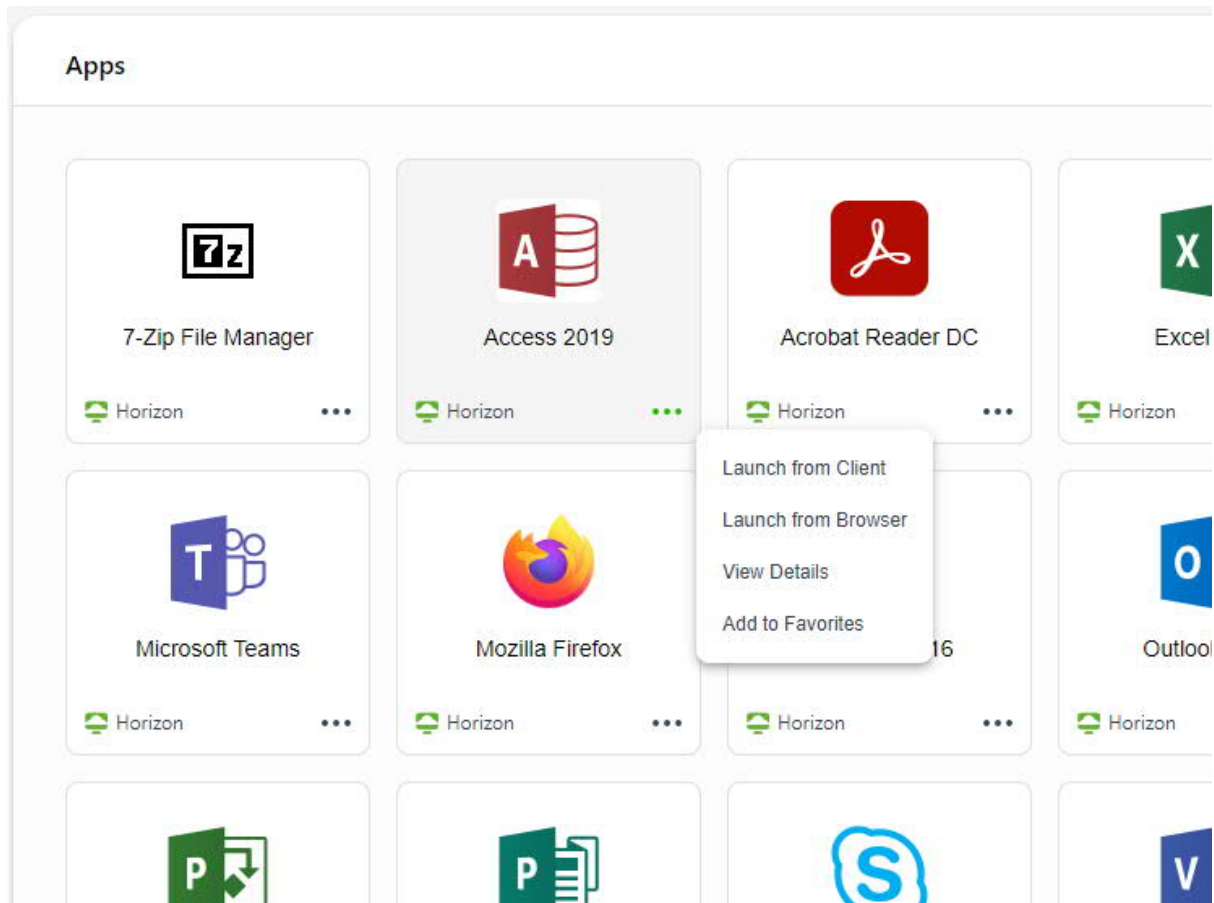
LUT-VDI -portal (one.lut.fi) will be opened after successful login.



Using LUT-VDI resources with a web browser without VMware Horizon Client

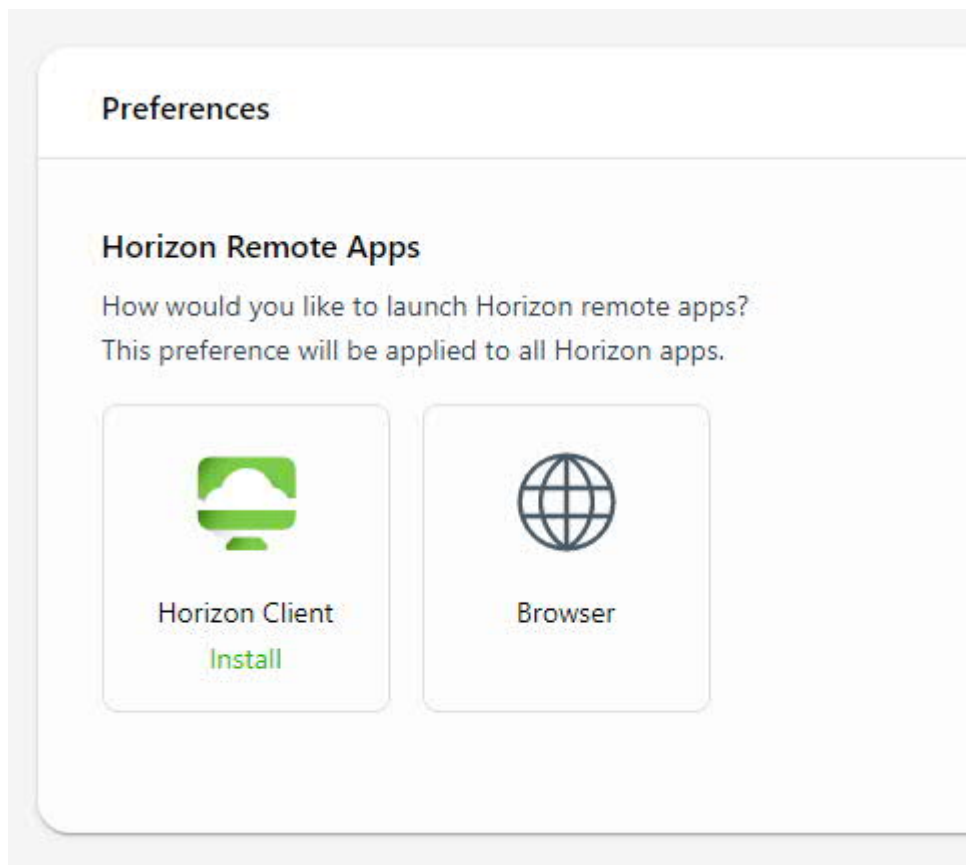
First log in to LUT-VDI web portal as in page 4.

Right click over the application will prompt you a menu. You can choose to launch application from Horizon Client or from browser.



If you want to set a permanent selection between Horizon Client and a browser window for launching a resource, click your name alphabets in upper right part of the page and then click "Account".

In "Preferences" section you can choose between Horizon Client and browser.




Additional info

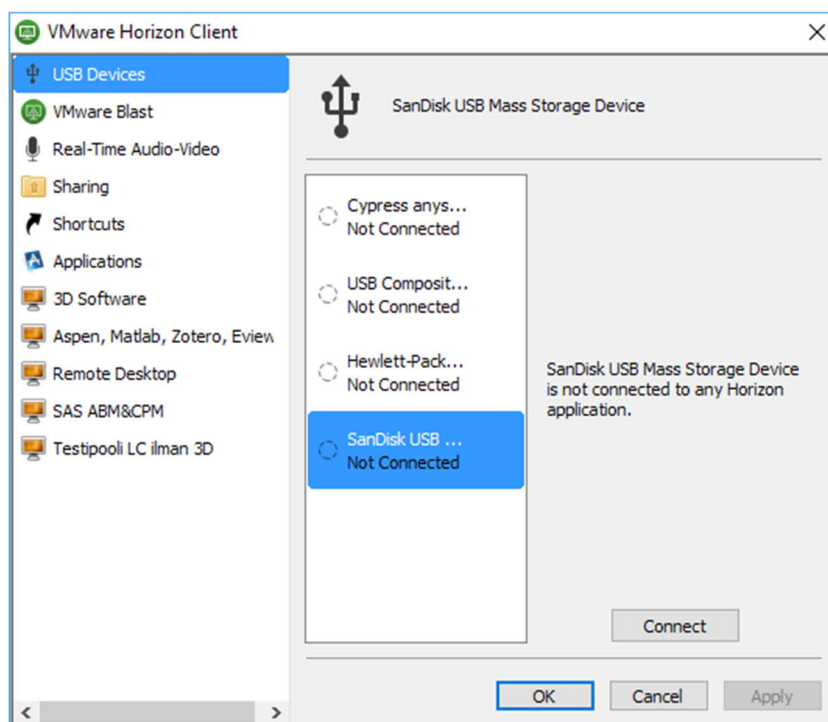
Different types of USB devices can be used with virtual desktops and applications, like flash drives and headsets.

You can also share folders from local computer, where VMware Horizon Client is installed. Local printers can also be used for printing with virtual machines and applications.

Connecting and using USB devices in VMware Horizon Client

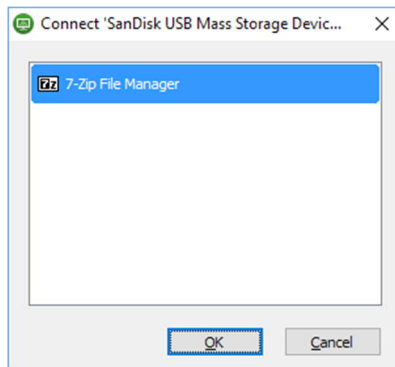
If you need to use for example a local USB printer or a flash memory stick with a virtual desktop or a program, follow the guidance below. *Please note that the USB device is not available on the host computer when it is used with Horizon Client.*

Go to settings by pressing  button in upper right corner of Horizon Client and choose "USB Devices" tab.

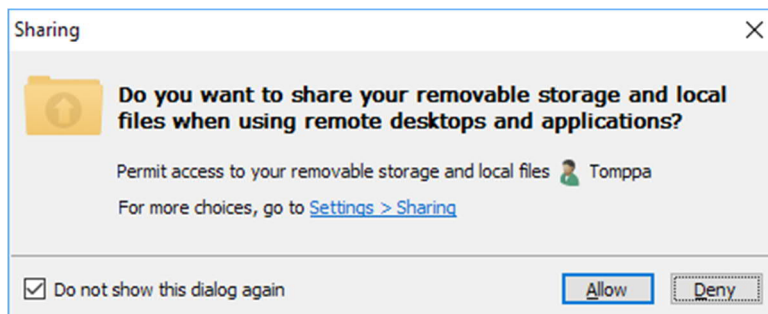


Choose the USB device and pick a desktop or a program where you want to attach the USB device and click "Connect". You can connect multiple USB devices if needed.

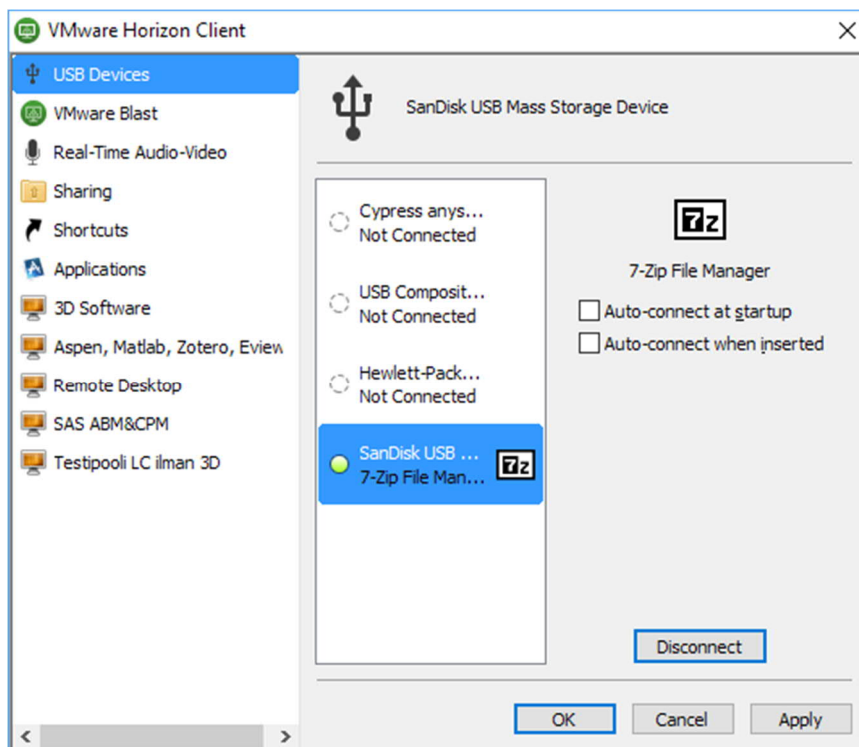
Finish the connection of a USB device by clicking "Ok"



Connecting a flash drive for a first time a popup might appear. Click "Allow".

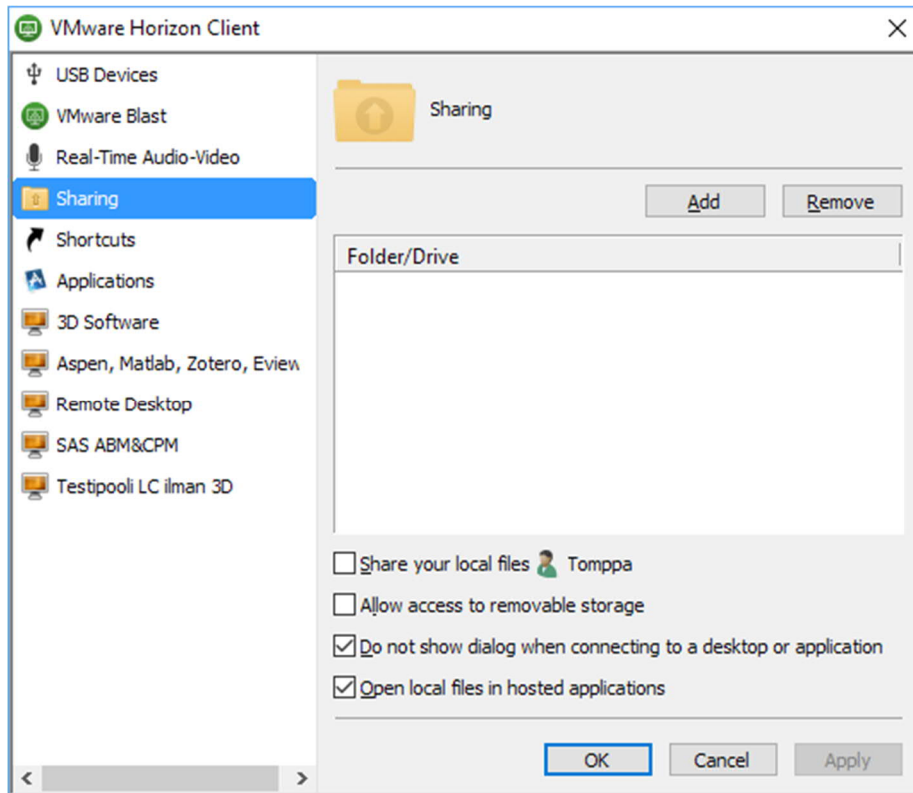


When you are finished you can disconnect the USB device by clicking "Disconnect" button.

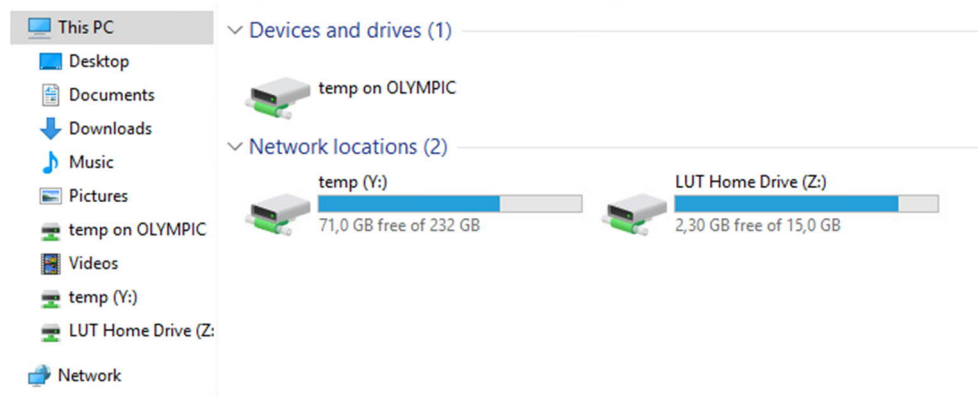


Share a folder from your host computer to a program or a virtual desktop

You can access host computer folders from the “Sharing” tab. Shared folders will be mounted as network drives on host computers. Click “Add”-button and choose a folder or folders which you want to share with a program or a desktop.

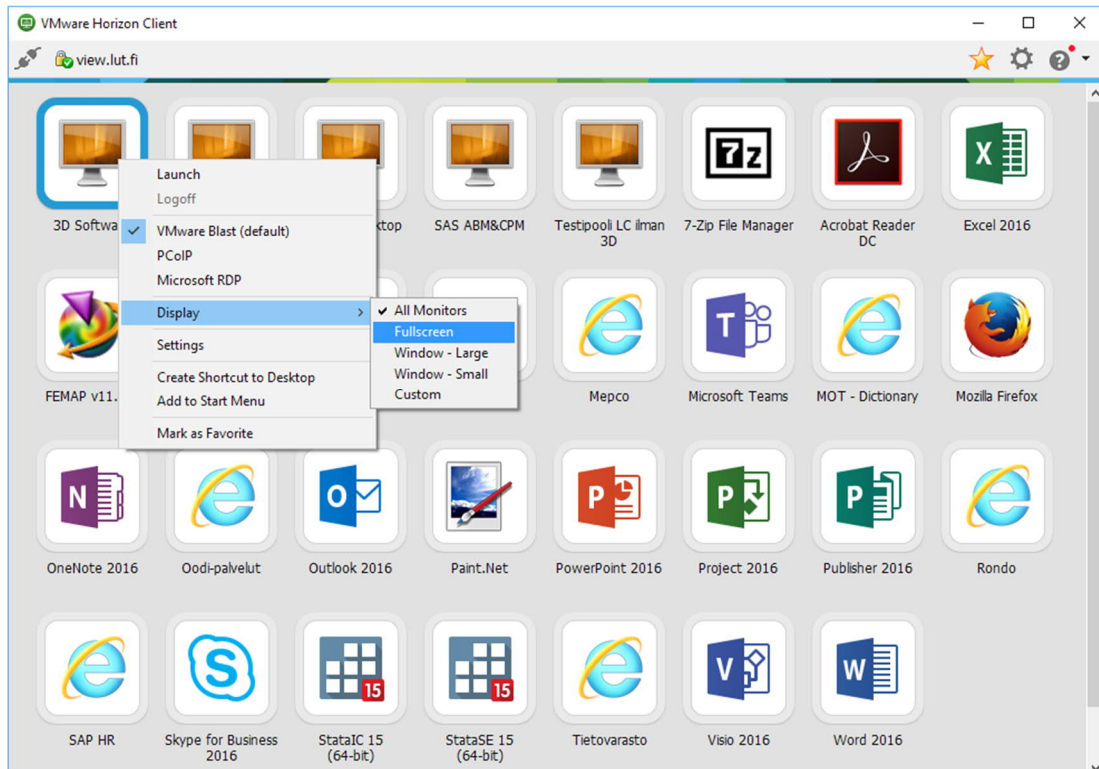


Example: Shared c:\temp –folder is mounted as Y: drive.



Changing display settings on virtual desktops

As a default, all desktops will utilize all monitors. You can select for example a “floating window” mode by choosing “Window – Large” or “Window – Small”. The selection will be remembered for later use.



You can resize windowed desktops or programs by dragging from a corner of a window.

In a desktop, sharing, USB and other settings can also be accessed from a Horizon Client window.

