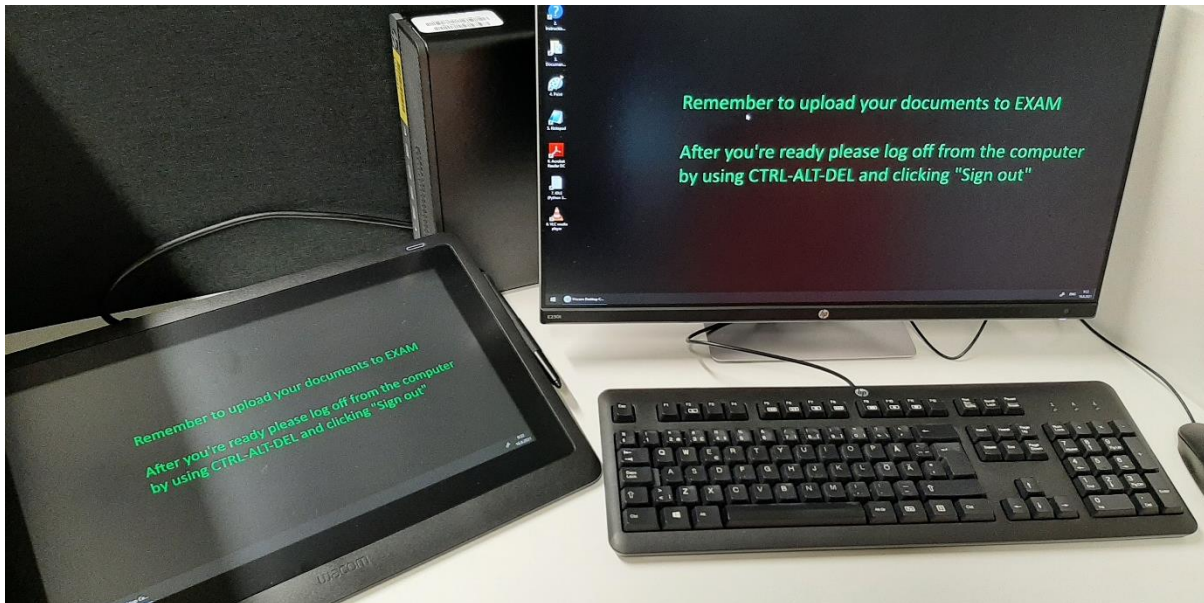


## Wacom Cintiq pen display

The following EXAM workstations are equipped with Wacom Cintiq 16 pen displays, which can be used for drawing and as extra displays.

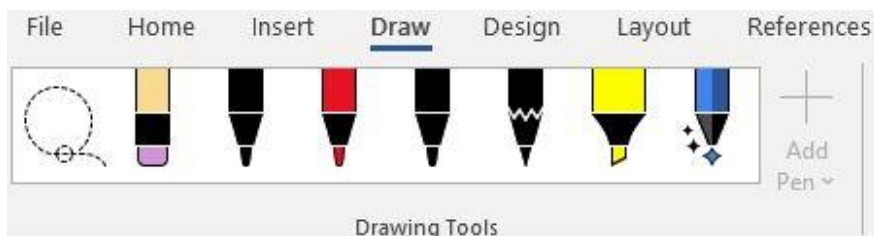
- Lahti, Mikkulankatu 19, 2nd floor  
Workstations: LAB: 11, 12, 13, 14 and LUT: 50, 51, 52
- Lappeenranta, Yliopistonkatu 34  
Workstations: LAB: 23, 26, 27 and LUT: 1, 5, 6



The Wacom pen is in the pen holder on the right side of the display. **Remember to place the pen back in its holder once you have finished drawing.**

You can use the following programs for drawing: Paint, Word, PowerPoint ja Excel. Start the program and move it in the pen display to begin.

In the Office programs you will find the pen thickness, color and other settings in the **Draw** tab. You can save your drawing as a Word/PowerPoint or a PDF file (for example) and then attach the file to the essay question in EXAM.



If you use the Paint program, you can save the image as a jpg file and then use it in Word or PowerPoint, for example.